



Guide to Installing Stack Stone Panelling

This is the step-by-step guide to safely installing all Stack Stone paneling using StoneClip.

Both the types of Stack Stone shown in this example weigh in at 6.8kgs/piece/600mm x 200mm =55.6 kilos per m² = well outside the parameters set by the glue manufacturers (eg, Ardex, which is 32-38kgs/m²).

PICTURE 1: Showing marking for the cuts in the stone panel to position StoneClip. They are 150mm from each end, but may vary according to the pattern you lay.

They are always cut in the middle of the bed - in this case, 10mm from the back edge, as the stone panels are around 20mm thick.

This allows you to use a 15 mm StoneClip for fixing width.

PICTURE 2: The tools and table, a piece of carpet and 2 only concrete blocks, a water bottle and a 100mm angle grinder + a ruler and pencil.

PICTURE 3: Shows the two slots have been cut with an electroplated diamond blade using a little water to keep it cool and to stop the stone from exploding from the heat of the dry cutting.

PICTURE 4: Shows rebates in the cuts in the panel of Stack Stone and StoneClip inserted. Rebate was cut with angle grinder. If this is done by a Router with a 6mm electroplated diamond round bit, a far neater result is achieved.

PICTURE 5: Shows cut on the LHS is blown out when not cut with water. The cut on the RHS was cut with water.

PICTURE 6: Shows two pieces of Stack Stone walling with StoneClips.

PICTURE 7: Shows the two panels installed on top of each other and no outward signs of being secured by StoneClip other than the blow out on the top LHS of the top panel (quartzite).

PICTURE 8: Shows StoneClips ready for fixing to the substrate. Fixing pins are different for each type of substrate. **IMPORTANT:** If StoneClip is positioned at the top of each 2nd row, you will have 6 StoneClip fixing per m², but if you position at the top of each 3rd row this comes down to 3 StoneClip fixings per m².

The number of fixings per m² shown above are minimum required and are only a guide, but if used in conjunction with a good polymer fortified cement based fix, good results should be achieved if the product and the substrate are both cleaned prior to fixing into place.



Picture 1: Marking the cuts



Picture 2: Tools and table



Picture 3: Stone Slot Cuts



Picture 4: Rebates



The cost of including StoneClip into your job is not a dear one for if you add 6 StoneClips per m2, this comes in at \$ 33.00 retail per m2, of course if it is 3 StoneClips per m2 it is only &\$16.00/m2 retail/m2.

The StoneClips are sold in boxes of 36 including fixing pins to suit concrete substrate.

The big advantage of including the StoneClip into the fixing operation is that you DON'T have to worry anymore about the product (wall being clad) going drummy or cascading off the wall as you are installing it or later on causing an unsafe environment.

If the area being clad is a display wall it can be fully mechanically fixed and if need be pulled down later on, simply by the retraction of the pins from the substrate.

The size of the StoneClips are:

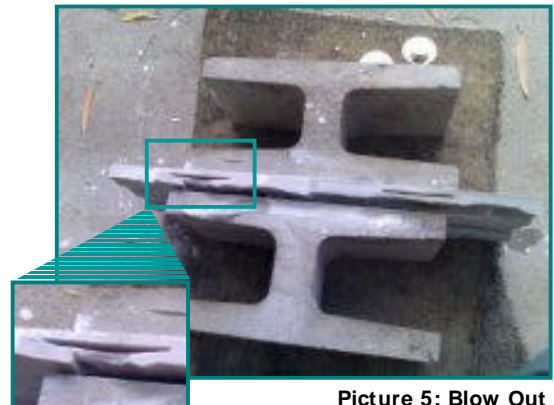
- 15 mm suitable for panels up to 20mm thick and allowing for 5 mm of fix to be applied to the back of the panel to be fixed.
- 20 mm StoneClips suit up to 30 mm product.
- 28 mm StoneClips suit up to 40 mm product.
- 33 mm StoneClips suit up to 50 mm product.

The type of fixing required for what type of substrate you are fixing to are shown on website. The StoneClips are available at stockists in QLD, NSW, VIC, SA as well as a number of agents also.

All of the above specs and testing refer only to the product StoneClip.com.

- John Redhead
Inventor, designer and manufacturer of StoneClip
Email: stonesol@bigpond.net.au

For more information on StoneClip products, visit our website at www.stoneclip.com



Picture 5: Blow Out



Picture 6: Stack Stone



Picture 7: Fitted panels



Picture 8: Ready to fix to substrate